



## A Message From Bob...

In 2010, our volunteers and partners began to plan and create the Bellemeade Outdoor Learning Campus for the purpose of creating an accessible eight-acre safe space dedicated to outdoor education for our regional youth and families. We have come a long way. We now have wonderful collaborations with educators from James River Association, Blue Sky Fund and other environmental and educational organizations who bring children into the park to learn about and connect to the natural world. To facilitate their work, we've developed a number of natural features, including: a youth vegetable garden and chicken "château", beautiful native flower gardens, a nature play area and adjacent woodland area with trails and native plantings, easy access to Albro creek, bee hives and bird habitat, walking and biking trails, and a bicycle repair shop. We are blessed with the support of various groups of volunteers, including soldiers from Fort Lee, church groups, students and teachers who lead our Saturday Literacy and Outdoor Club, Boy Scouts, and master naturalists and accomplished horticulturists who are intent on meaningfully restoring native habitat. More and more, we are connecting to volunteers of different backgrounds who want to support our mission.

We are witnessing our dedication and efforts pay great dividends. We will host over 4,000 students, nature play, and home school groups at our thriving campus this year.

To build long-term viability for both the physical park and our mission, Friends of Bellemeade Park became an independent organization with 501(c)(3) status in 2022. We are building out our capabilities, including a diverse and qualified board of directors and the infrastructure required to sustain an independent non-profit organization.

It is magical to observe and hear the laughter of our children and families enjoying our beautiful campus. Please come and enjoy the park as well as volunteering with our dedicated team.

To learn more, please [visit our website](#) and check out our [Facebook page](#) for regular updates.

See you in the Park!!

## Friends of Bellemeade Park making a difference in the community...



# Want to make a difference?

If you believe that everyone deserves a special place to connect with nature, join our corps of volunteers. Want to teach a child to read, build life skills or learn more about nature's wonders?

Love working in field and stream or digging in the dirt? Want to share your passion for our chickens, bees and other creatures in the park? We offer several volunteer opportunities.

Visit our website at [www.bellemeadeparkrva.com](http://www.bellemeadeparkrva.com)



[Friends of Bellemeade Park](#)



## EXPLORE SCIENCE



### Outdoor Education

Bellemeade Outdoor Learning Center provides the ideal setting for 3rd and 4th grade students to explore science and the environment through programs run by James River Association and Blue Sky Fund.

## NATURE, SHARE, and CONNECT



### Conserve and Create

Conserve and Create workdays are currently scheduled for the first Saturday in March through December: 9am to 12pm. Come share your knowledge, abilities and passion to enrich our beautiful outdoor treasure.

## READ, PLAY, and EXPLORE



### Saturday Outdoor Club

The Saturday Outdoor Club aims to foster a love of reading among our children while engaging them in outdoor activities that build curious learners who can connect to the natural world through creative play and exploration. Volunteers of all ages are needed to lead activities.

## ENRICHMENT ACTIVITIES



### Outdoor Community Building

Various organizations are working with Friends of Bellemeade Park to provide enrichment activities in the park, including fly fishing instruction, soccer, and a weekly "Mom's Club" for mothers and their young children to interact and share.

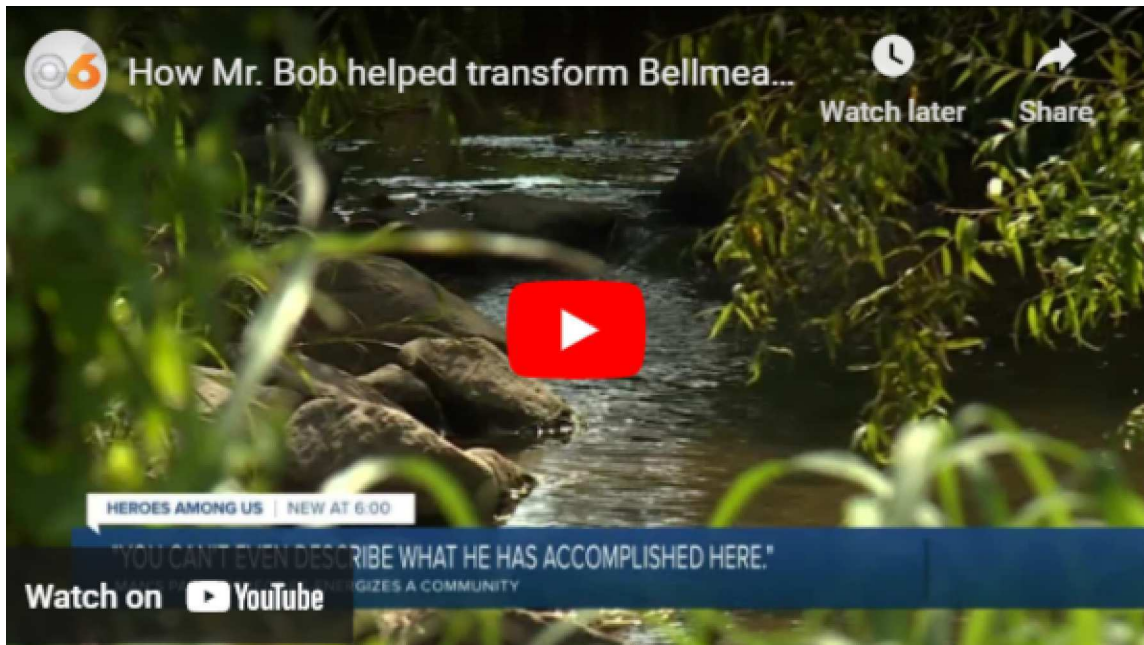
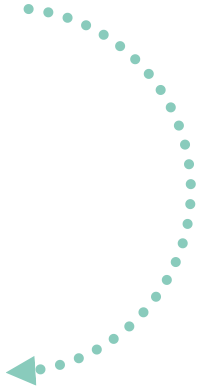




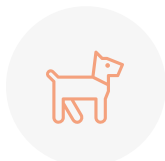
VISIT US ONLINE TO LEARN MORE ABOUT ADDITIONAL ACTIVITIES AND VOLUNTEER OPPORTUNITIES!



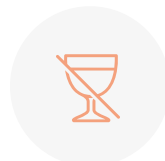
The transformation of Bellemeade into 'the most beautiful park in Richmond'



Hours  
7am - 10pm



All dogs  
must be  
leashed



No Alcohol



No  
motorized  
vehicles

Follow us for more insight



[Friends of Bellemeade Park](#)

Contact us: [friendsofbellemeadepark@gmail.com](mailto:friendsofbellemeadepark@gmail.com)

© 2023 Friends of Bellemeade Park

Bellemeade Park • 1800 Lynhaven Avenue • Richmond, VA 23224