



A Message From Bob...

“Build it and They will Come!” That is a phrase from the movie “Field of Dreams.” That’s been our story for the Bellemeade Outdoor Learning Campus this summer. When I look back over the summer, I can't believe what we have hosted for a variety of organizations: volunteer activities, camps, farming activities, youth mission groups, nature play, and home school groups. There’s been a definite increase in the number of regional community families and children visiting the park. We recently had eight young people visit from the Hickory Hill Recreational Center. All had a wonderful time discovering the park and one child said, “This is the best day of my life!”

The park is where I go to just enjoy the sights and sounds of our children enjoying nature. In addition to children who visit the park with James River Association, Blue Sky Fund and other groups, my little posse is made up of fourteen children from the ages of four to fourteen. They have discovered the joy of playing outside and getting away from all the commotion, confusion, and conflict in today's world. Everyday my phone is ringing starting at 7:30 and the question is “Mr. Bob, can you pick us up and go to the park today?” I can’t answer any other way than “yes.” Our children benefited from the Westview on the James residential camp, Foxfire Eveninging Equestrian Camp, Virginia Tech Extension with “Summer moves and nutrition classes,” Bluesky Fund adventure camp, River Discovery trip sponsored by the James River Association and twice a week visits to the park for gardening, tending to our chickens and swimming in the Creek.

Friends of Bellemeade Park making a difference in the community...



We could not do without our volunteers!

Many groups of volunteers helped maintain the beauty of our outdoor learning campus and contributed significantly to its enhancement: **Catholic Heart Youth Camp, St Luke's Lutheran Church** from Dix Hill on Long Island, New York, **The Church of God and Saints of Christ**, incoming 9th-grade students from **Christo Rey, St. Gertrudes, Benedictine, Tuckahoe Presbyterian Church, Trinity United Methodist Church**, work groups from **Fort Lee, Carmax, and Truist. Riverine Chapter of Master Naturalists**, and many others who found us through **HandsOn Greater Richmond**.

We also thank our faithful teams from the **Richmond Tree Stewards and Riverine Chapter** for their ongoing work.



Visit our website at www.bellemeadeparkrva.com



EXPLORE SCIENCE



Outdoor Education

Field trips for **JRA and Blue Sky** are in the works!

Over 3400 students from Richmond Public Schools and Chesterfield will visit our outdoor learning center to explore science and connect with the outdoors this school year.

NATURE, SHARE, and CONNECT



Conserve and Create

Join us the first Saturday of each month for our "Conserve and Create" activities. If you'd like to volunteer, please register with us on **HandsOn Greater Richmond** or give me a call at 804-310-1080 or send me an e-mail at rargabright@me.com.

READ, PLAY, and EXPLORE



Saturday Literacy & Outdoor Club

We resume our Saturday Literacy & Outdoor Club which meets every Saturday from 10:00-12:30, beginning October 14. We are blessed to have a ten-year partnership with the **Collegiate School** AP Spanish students and approximately forty community Hispanic children from the ages of four to fourteen.

ENRICHMENT ACTIVITIES



Outdoor Community Building

In addition to providing an ideal setting for nature play and home school groups, we've hosted walking tours and events for Richmond Tree Stewards, the Riverine Chapter of Virginia Master Naturalists, and the Richmond 300 planning group, among others.

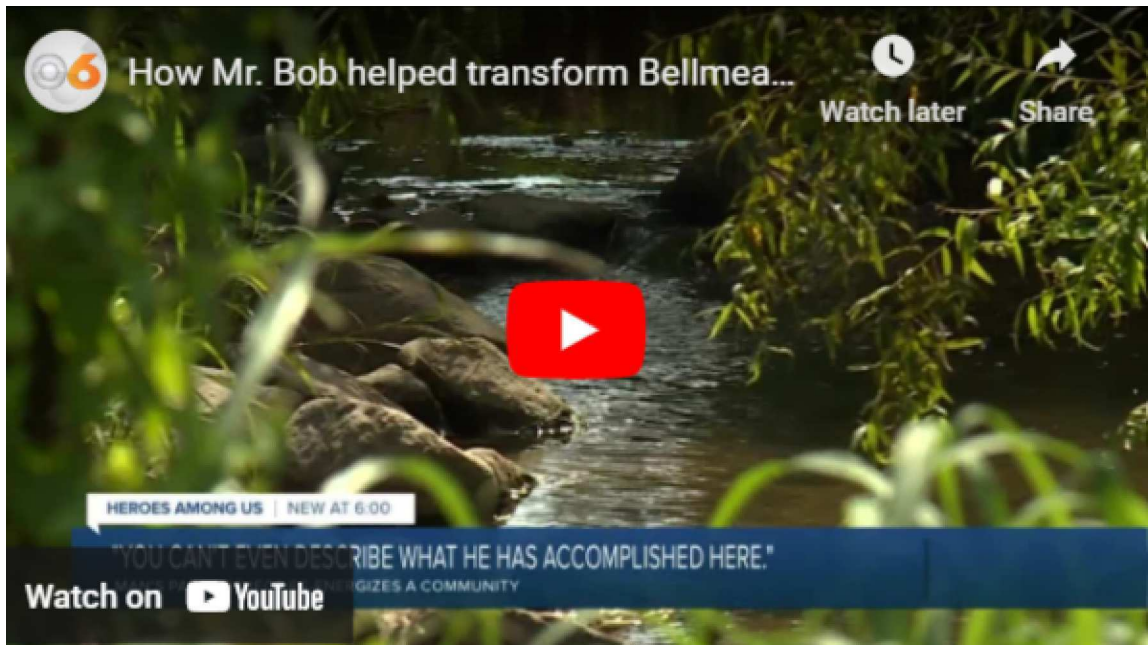
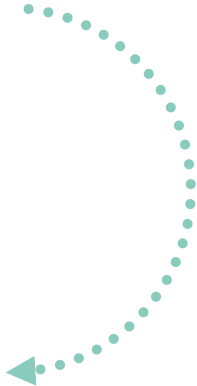




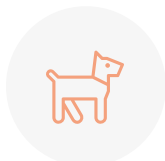
VISIT US ONLINE TO LEARN MORE ABOUT ADDITIONAL ACTIVITIES AND VOLUNTEER OPPORTUNITIES!



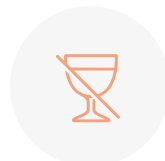
The transformation of Bellemeade into 'the most beautiful park in Richmond'



Hours
7am - 10pm



All dogs
must be
leashed



No Alcohol



No
motorized
vehicles

Follow us for more insight



Contact us: friendsofbellemeadepark@gmail.com

© 2023 Friends of Bellemeade Park

Bellemeade Park • 1800 Lynhaven Avenue • Richmond, VA 23224